

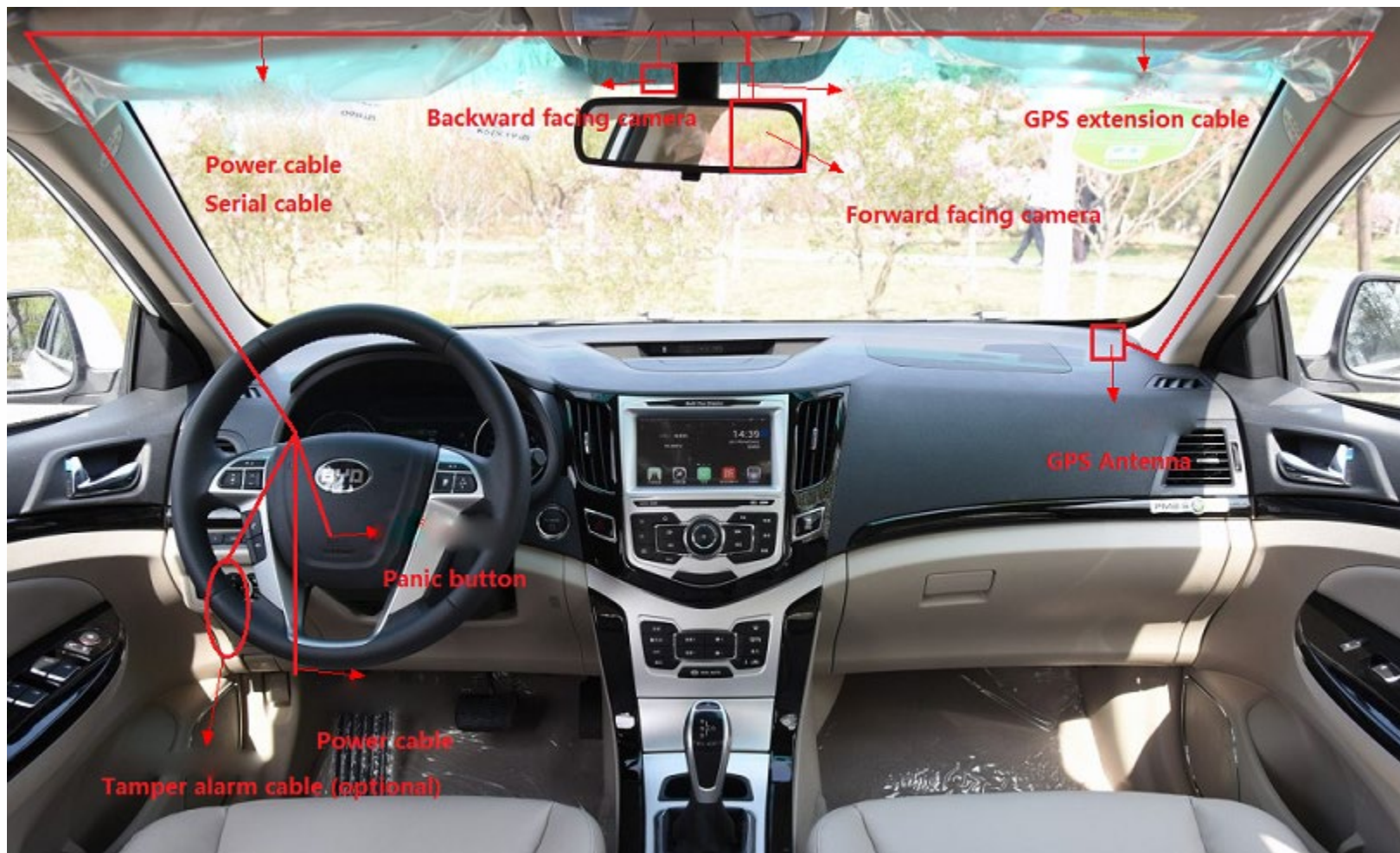
# **Mini MDVR Installation Guide**

# Mini MDVR installation

**WOLFCOM®**

System installation diagram shows as below:

1. System should not affect the driver driving sight.



## System components:







## 1. Estimate the installation location:

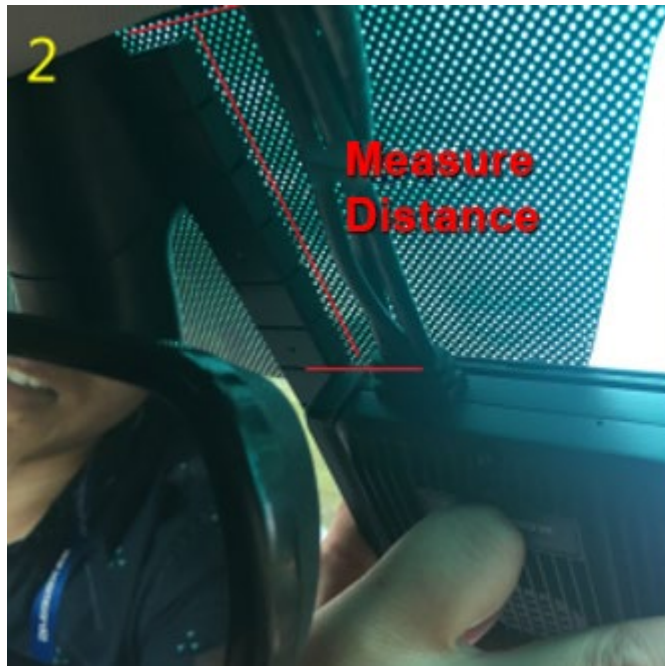
Select cameras installation location:

- a) Rearview mirror shouldn't block the view of the camera.
- b) Camera shouldn't affect the rearview mirror angle adjustment .
- c) The Interior-Facing Camera is recommended to be installed on the top edge of the windshield and the rear edge of the rear-view mirror (as the picture shows).



## 2. Determine area of placement

## 3. Clean the glass

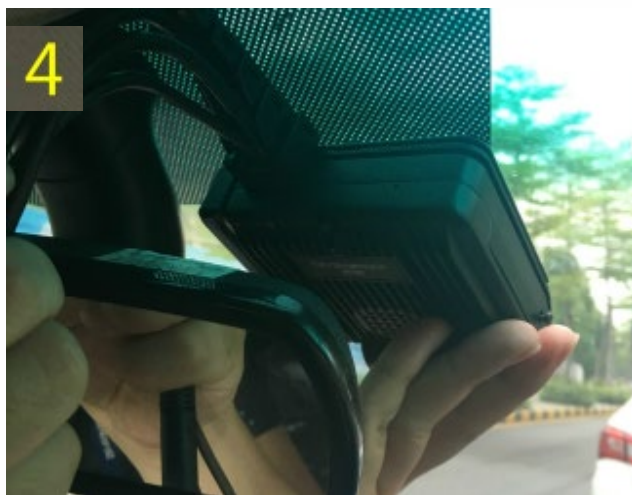


## 4. Stick the Mini MDVR onto the windshield.

Make sure the 3M tape is securely stuck to the glass.

## 5. Install the Interior-Facing Camera.

Select the proper position for this camera and stick it on the windshield.



## 6. GPS antenna installation

The recommended install position of GPS antenna is shown in the picture.

## 7. Install the power/ACC cables.

Tip: The power and ACC cable must be connected after to the car fuse.





## Recommended panic button installation position

**WOLFCOM®**

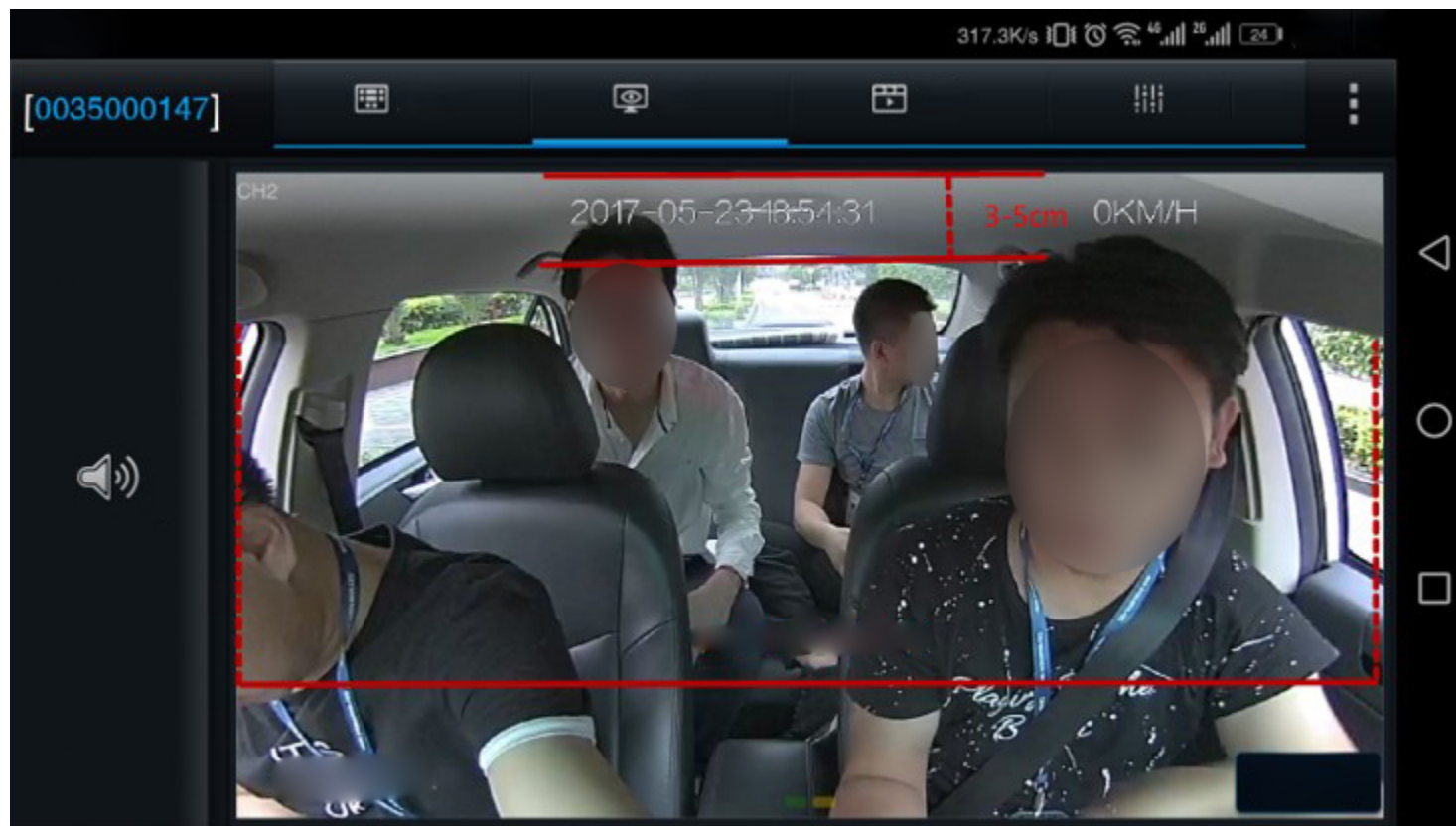






## 8. Lens angle adjustment

Connect Mini MDVR to Easycheck, login and check the video monitoring, adjust the angle of camera lens to get proper field of view.



# Full view of installation

**WOLFCOM®**









---

**WOLFCOM®**

